

Ⓟ  
Windmill B

CALK

SWR #1

SWR #2

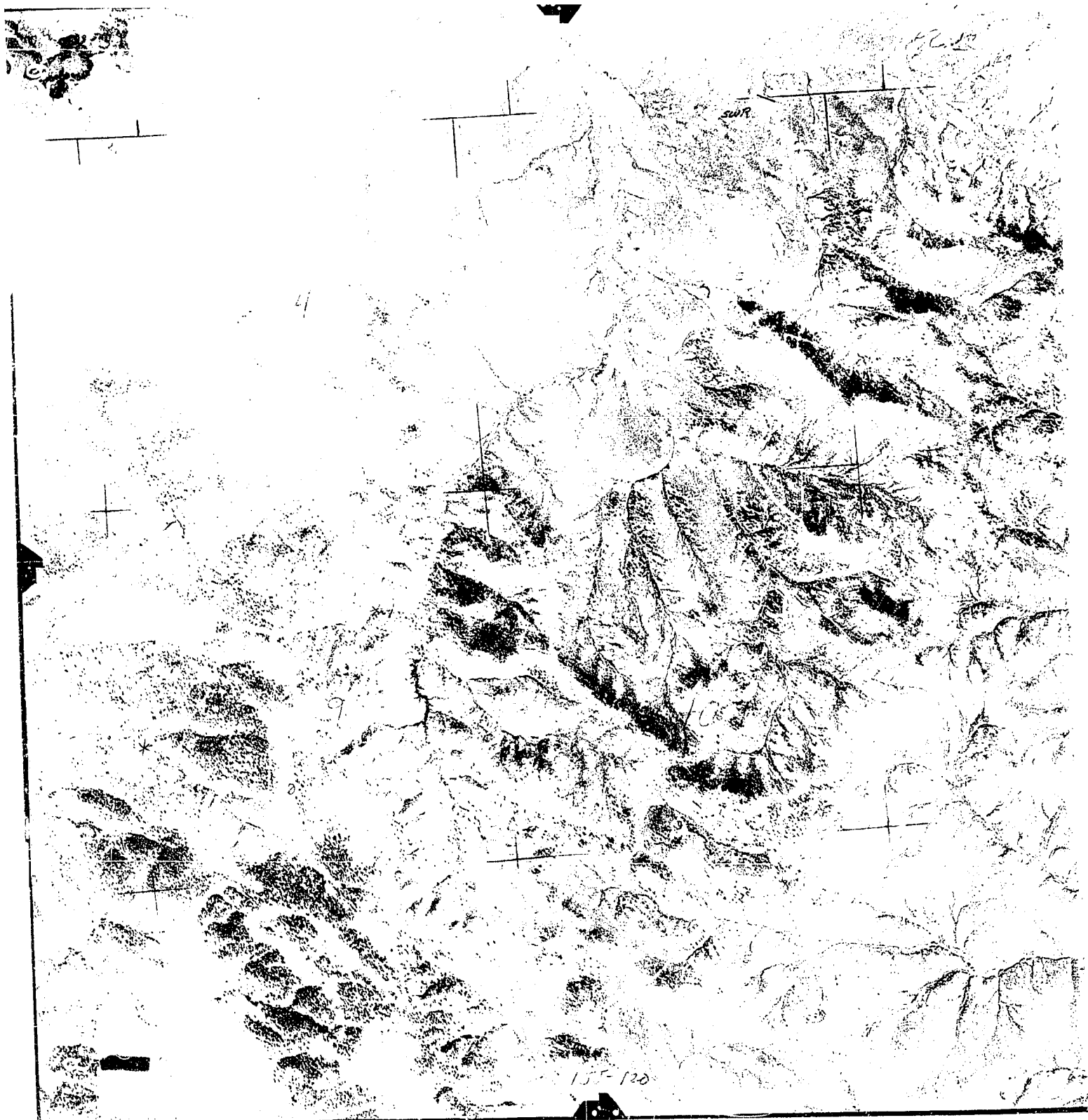
5

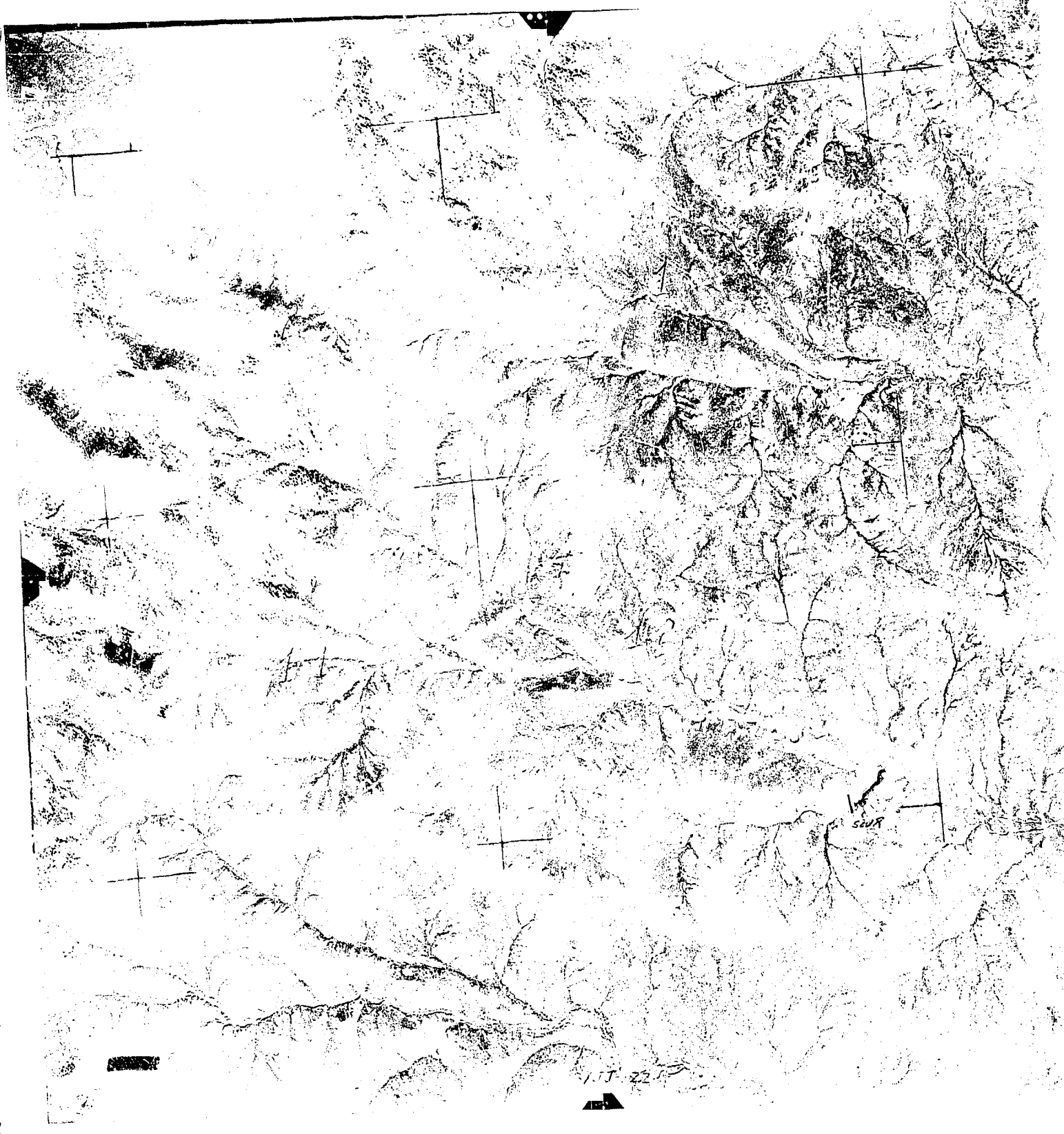
L.O.

SWR #3

PWS

AL





17



2 JT 49

WELL 'D' / 3

SNR #3

16

ROAD

SNR #2  
WELL 'C'

WINDMILL 'E'

24

WINDMILL 'A'

SNR #1

WINDMILL 'B'

CREEK

2 JT 50

251-27

14 Windmill "A"  
SWR #2

13

23

24

ROAD

SWR #3

#1 SWR  
SPRING

CREEK

130-48

SWR #11  
2 A/E

SWR #10  
5.0 A/F

SWR #13

SWR #6

SWR #9  
8 A/E

SWR #5  
Washed out

SWR #7

SWR #4

SWR #12  
Washed out

SWR #3

Windmill A

32  
COFFEE

CREEK

SWR #1

SWR #2

31

Windmill B

(BASE LINE)

POWDER RIVER COUNTY



11.5-12.5

SWR

SWR

28

Well B

33

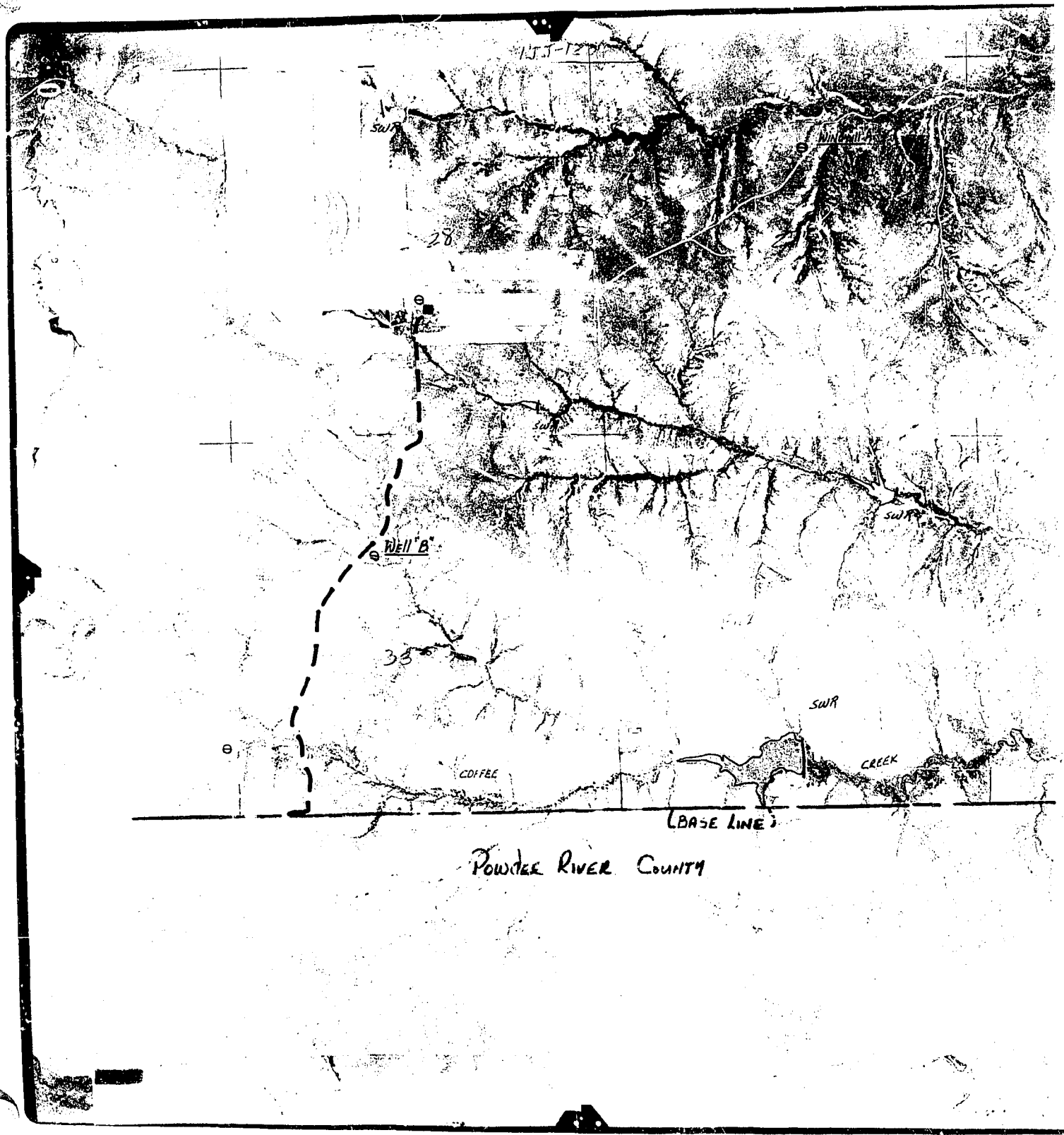
SWR

COFFEE

CREEK

(BASE LINE)

POWDER RIVER COUNTY



15J-130

ROAD

CREEK

24

25

35

SWR

36

SWR

COFFEE

CREEK

(BASE LINE)

POWDER RIVER COUNTY