

8960

15 12 21 30

101

102

13

18

24

19

1/2 23

Spring D. 6237

S.W.R. D2131 4.3 A/F

S.W.R. D2218 4.1 A/F

S.W.R. D6212 0.8 A/F

WELL D6189

S.W.R. D6217 0.3 A/F

S.W.R. N.O. 1 A/F

WELL D2130

WELL D2136

WELL D2132

WELL D2133

S.W.R. D2135

RESERVOIR

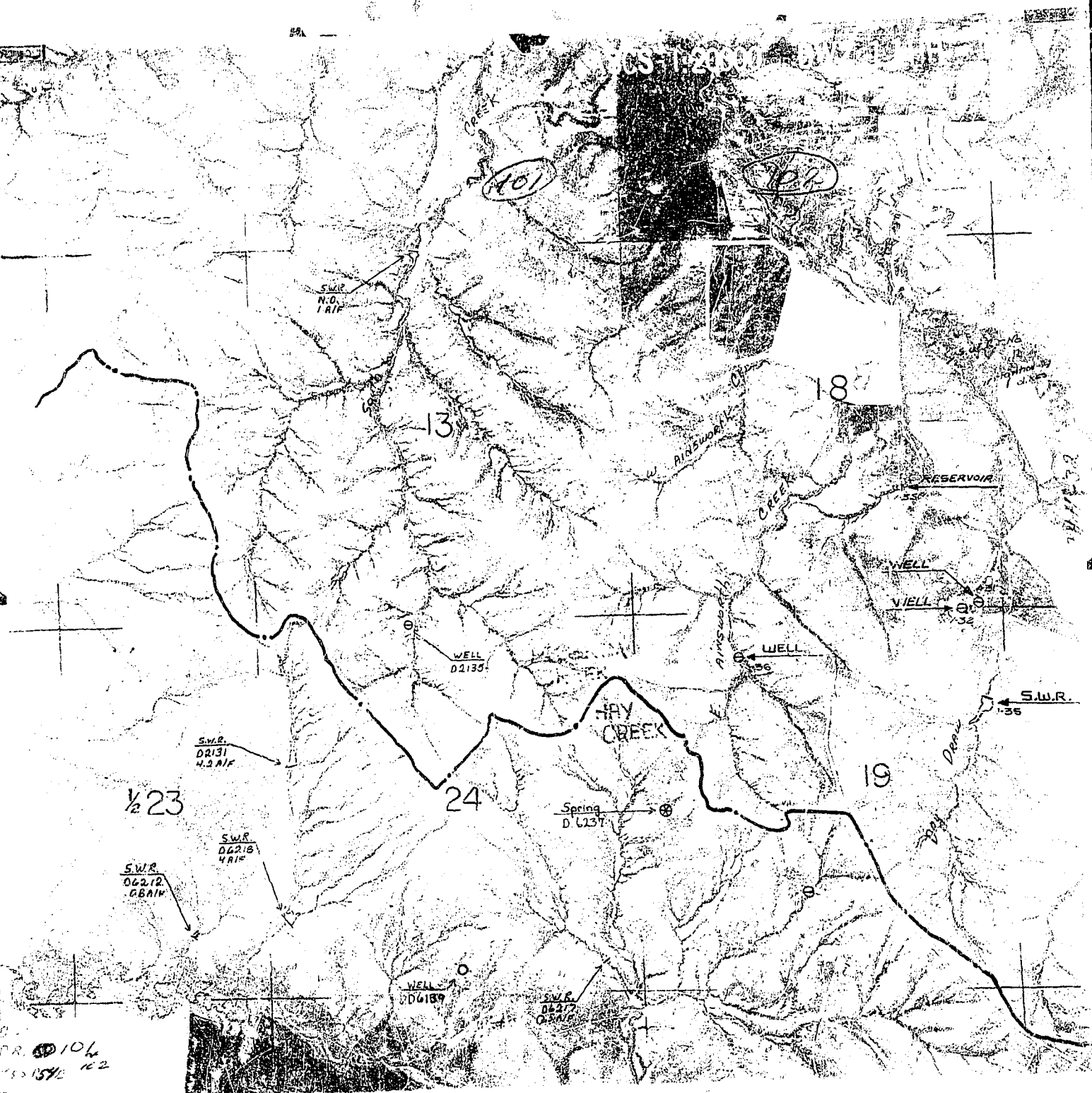
JAY CREEK


W. AINSWORTH CREEK

E. AINSWORTH CREEK

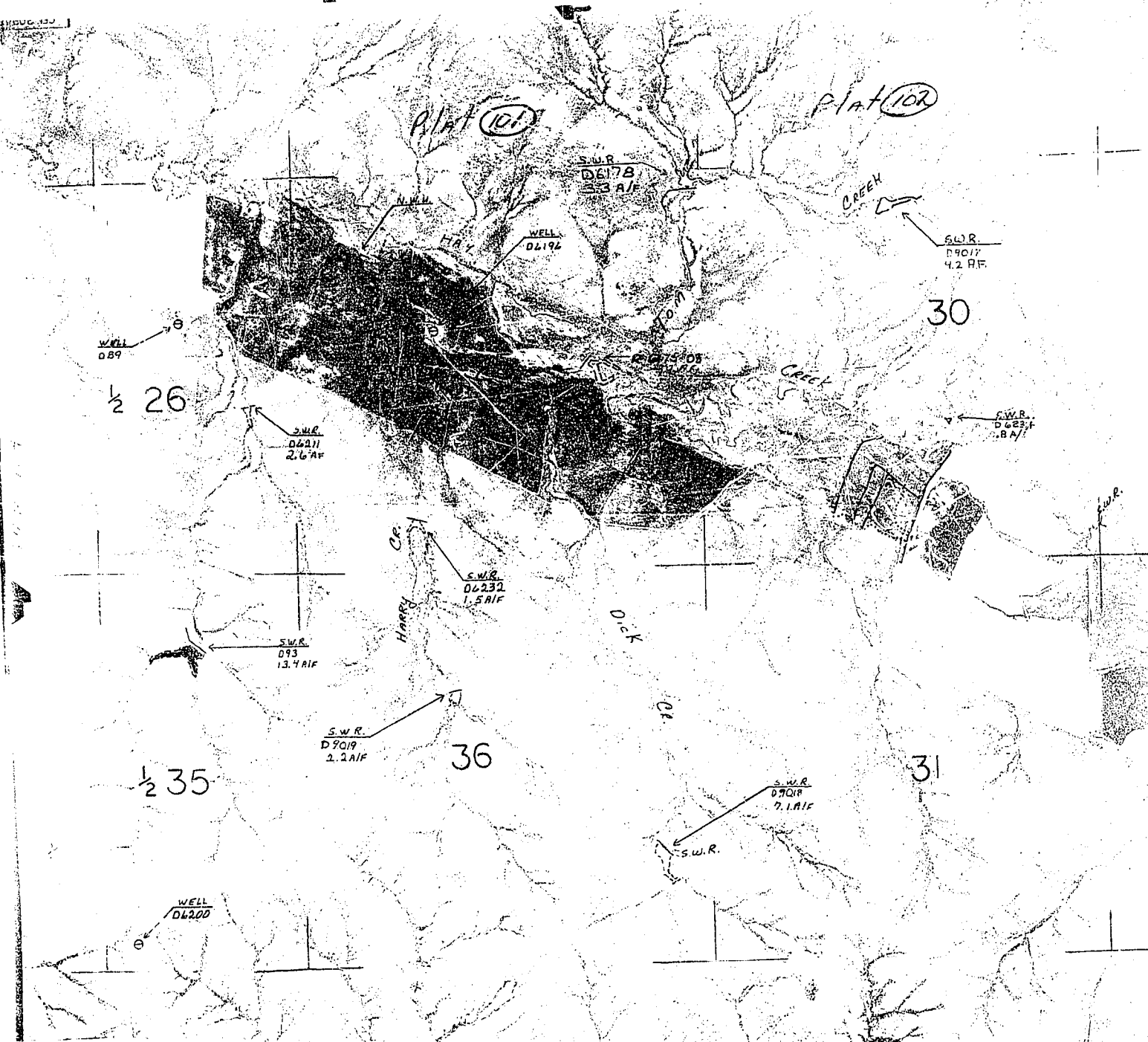
DEAN DRAIN

PR. 106
151572 102
15 15 21





B 01 P.R.
1004 101
T 55 R 53 E
T 5 R 54 E



Plat 101
 PR 101
 155 AS/E
 233 AS/E

6-2

1887 308

PILGRAM CREEK

29

Well D6184

Well D6202

Well D1892

IRR & SWR
D6167
1.86 a.f.

Well D6186

HAY CREEK

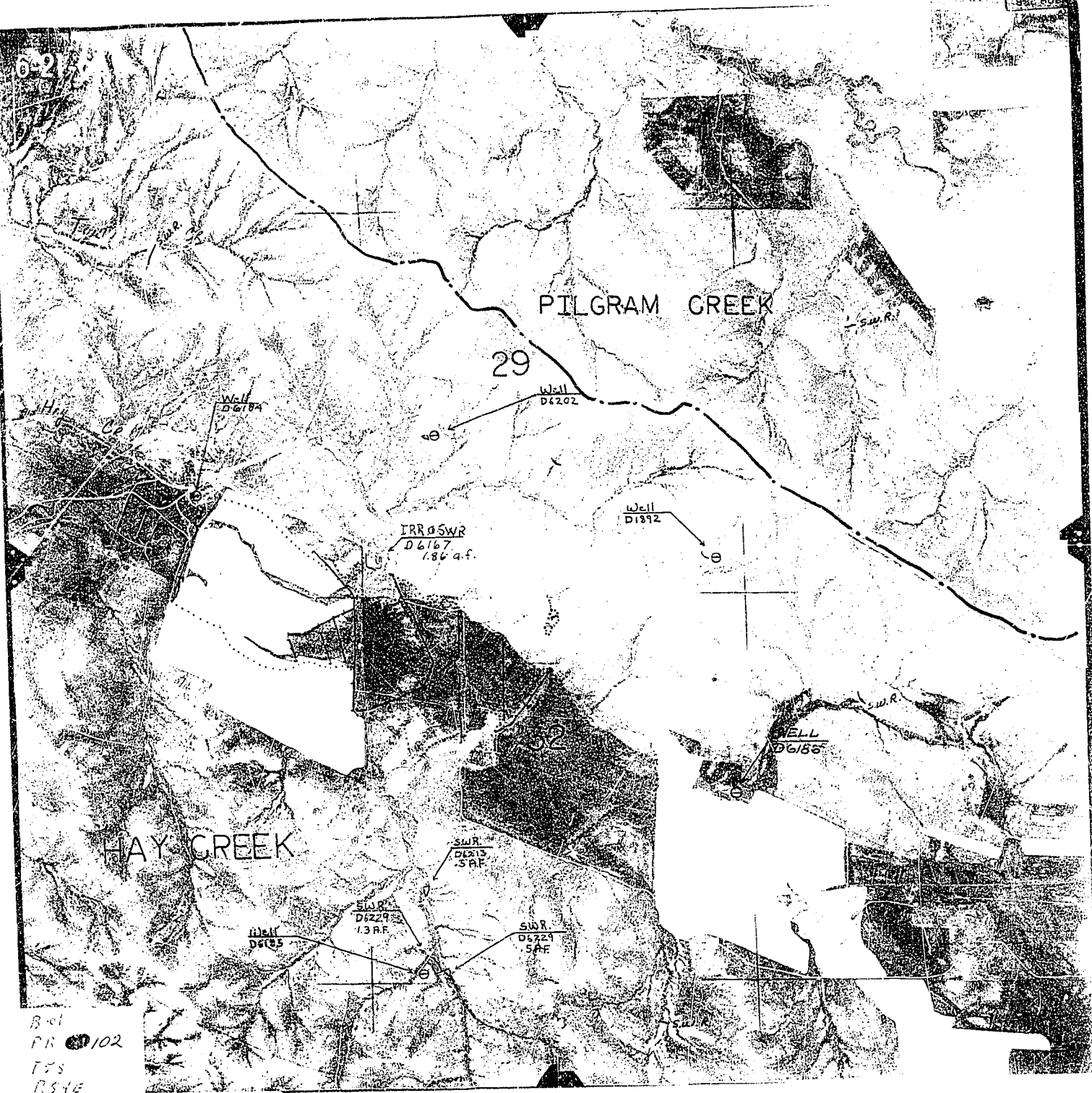
SWR
D6113
5AF

Well D6285

SWR
D6229
1.3 R.F.

SWR
D6721
5AF

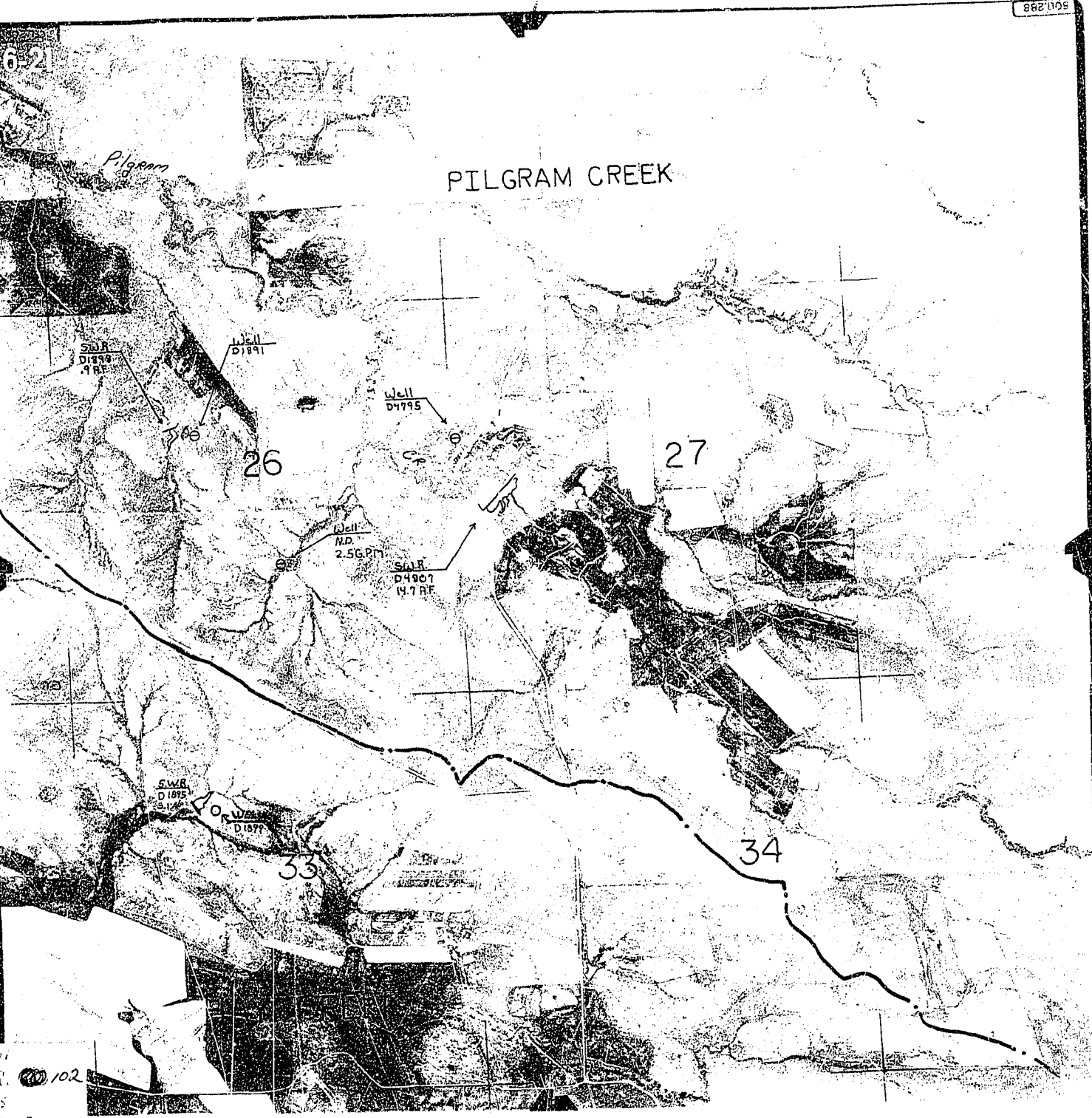
Ref
PR 102
TSS
RSTE



6-2

Pilgram

PILGRAM CREEK



102

4 E

ACS 1220000 19

101

102

S.W.R.
A.O.
1.1 AIF

13

18

RESERVOIR

WELL

WELL

WELL
0236

WELL
02135

HAY CREEK

S.W.R.
1.35

1/2 23

24

19

Spring
D. 6237

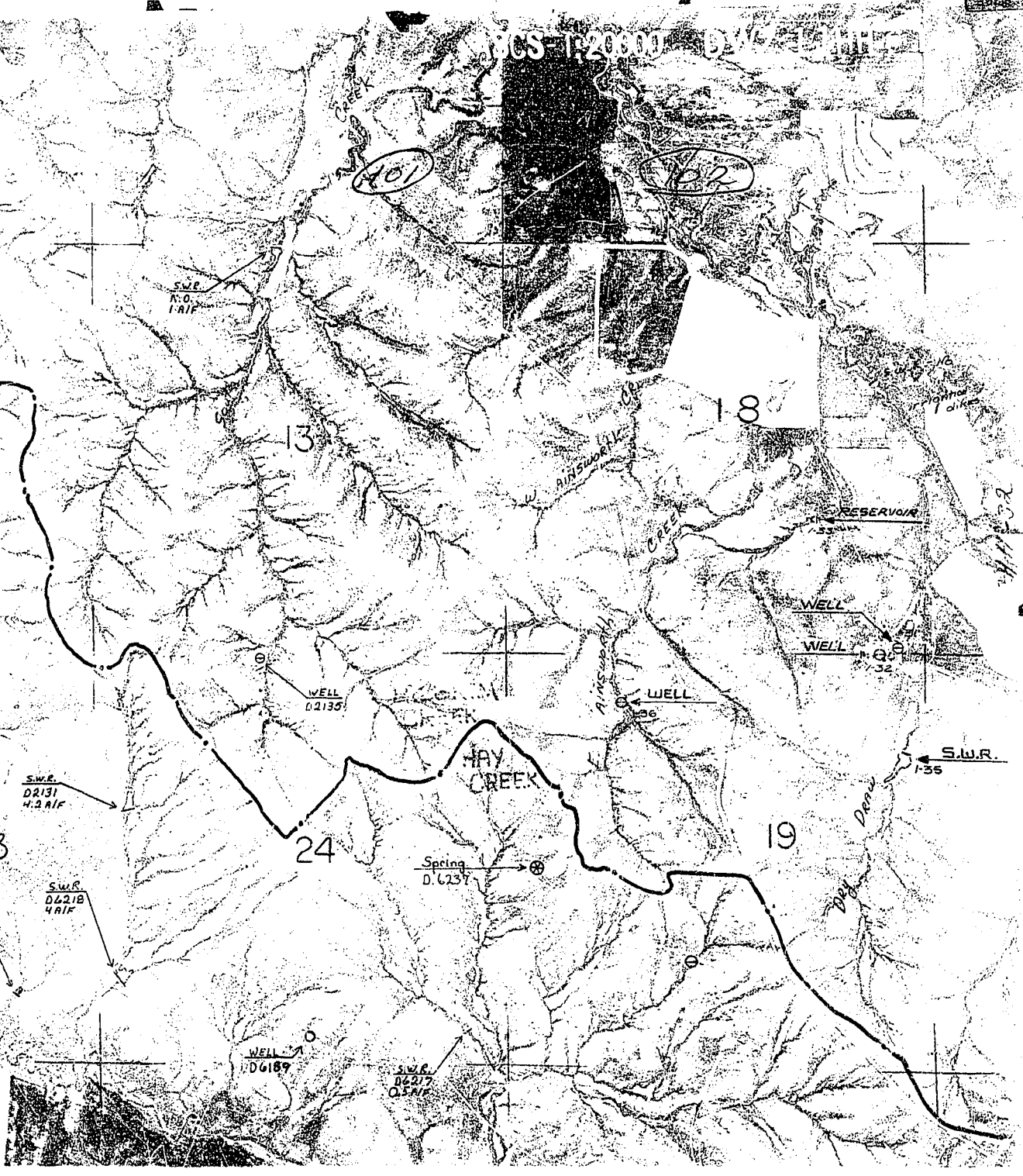
S.W.R.
D6212
.08 AIF


S.W.R.
D4218
4 AIF

WELL
D6189

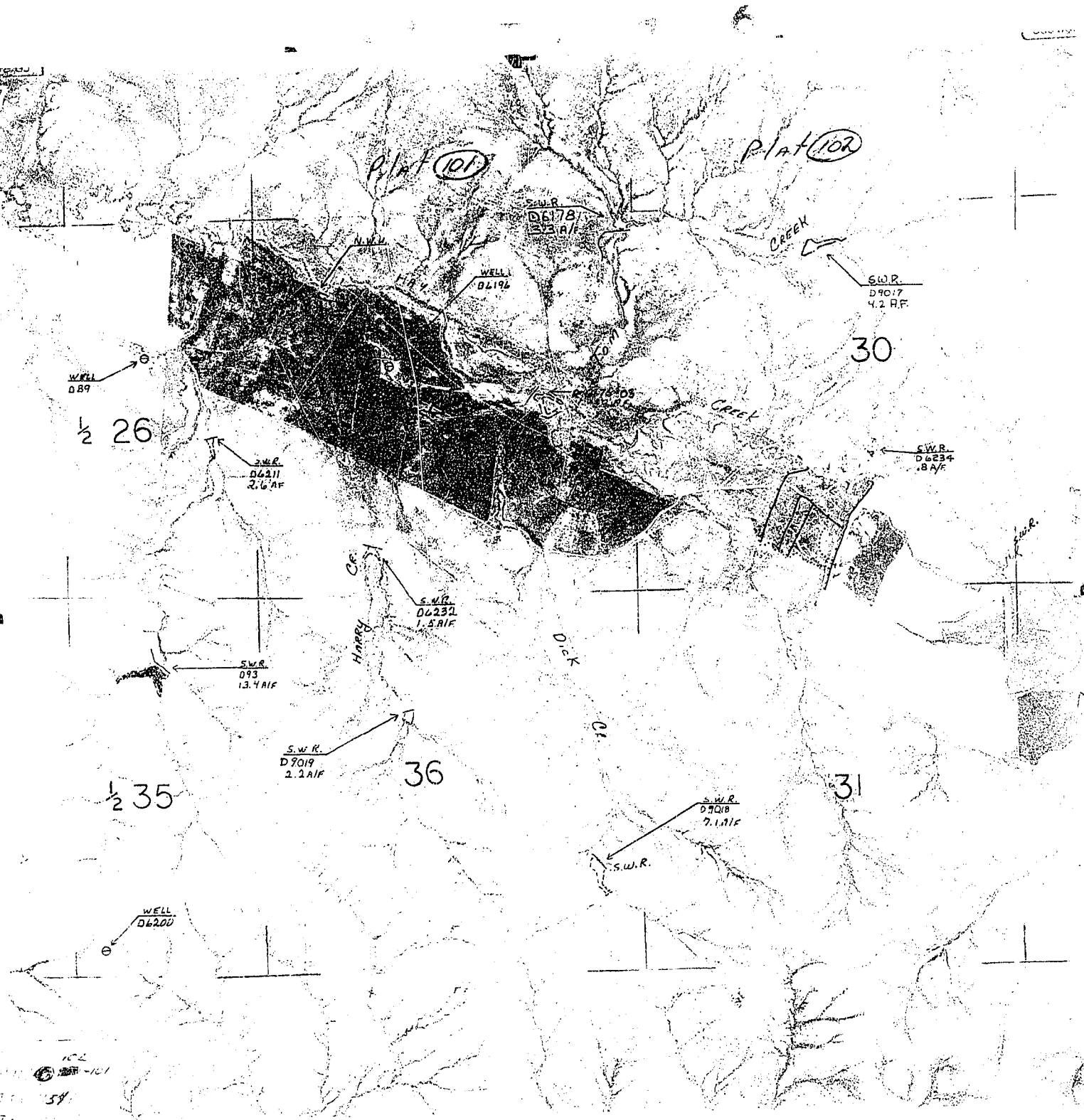
S.W.R.
D6217
0.5 AIF

106
154 102
T.S. 102





B 01 RR.
1004101
T 55 R 53 E
T 55 R 54 E



102
101
57

6-2

PILGRAM CREEK

29

Well D6104

Well D6202

IR. & SWR
D6167
1.86 a.f.

Well D1892

HAY CREEK

WELL D6186

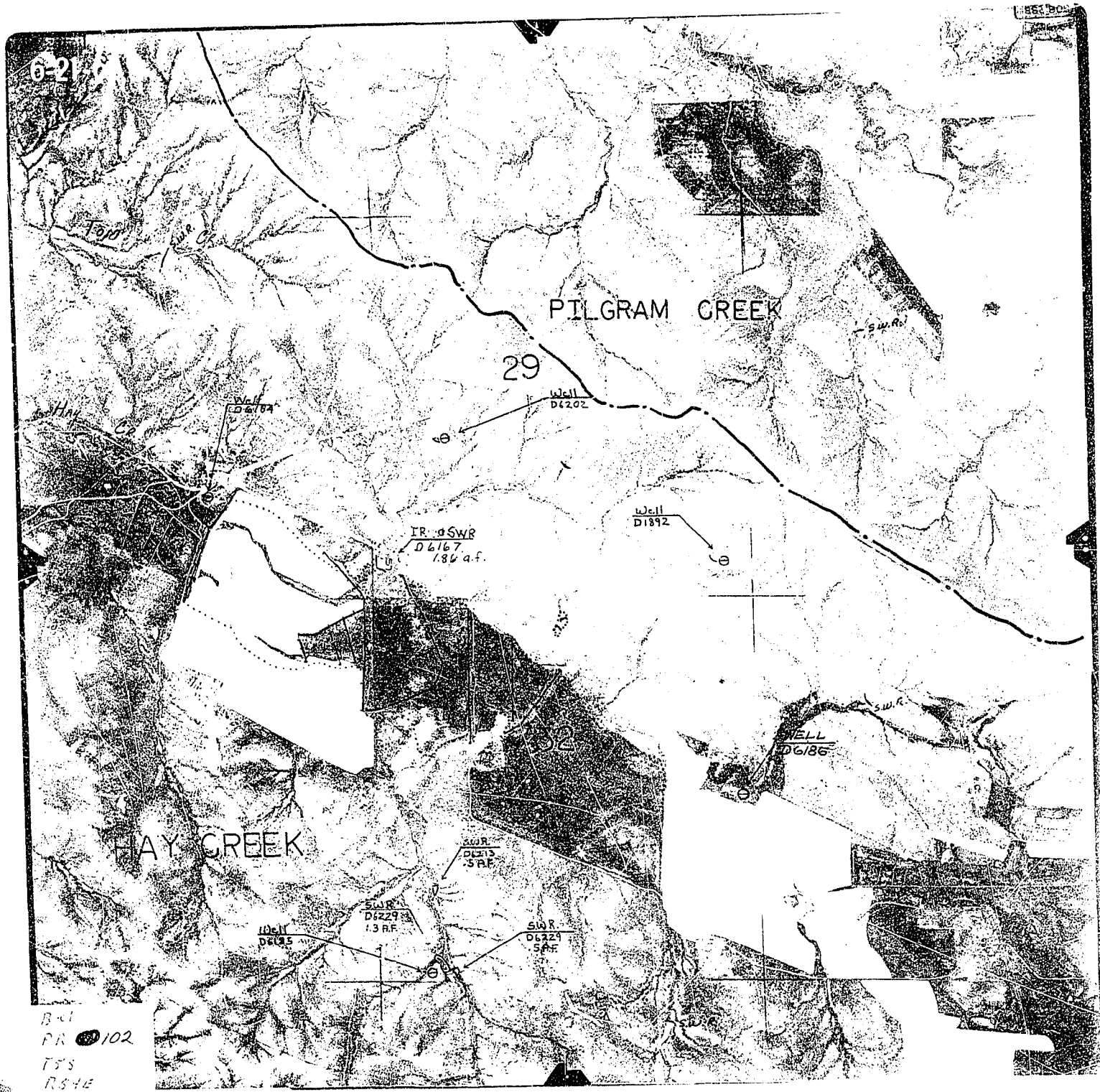
SWR
D6113
S.F.F.

Well D6225

SWR
D6229
1.3 R.F.

SWR
D6224
S.F.F.

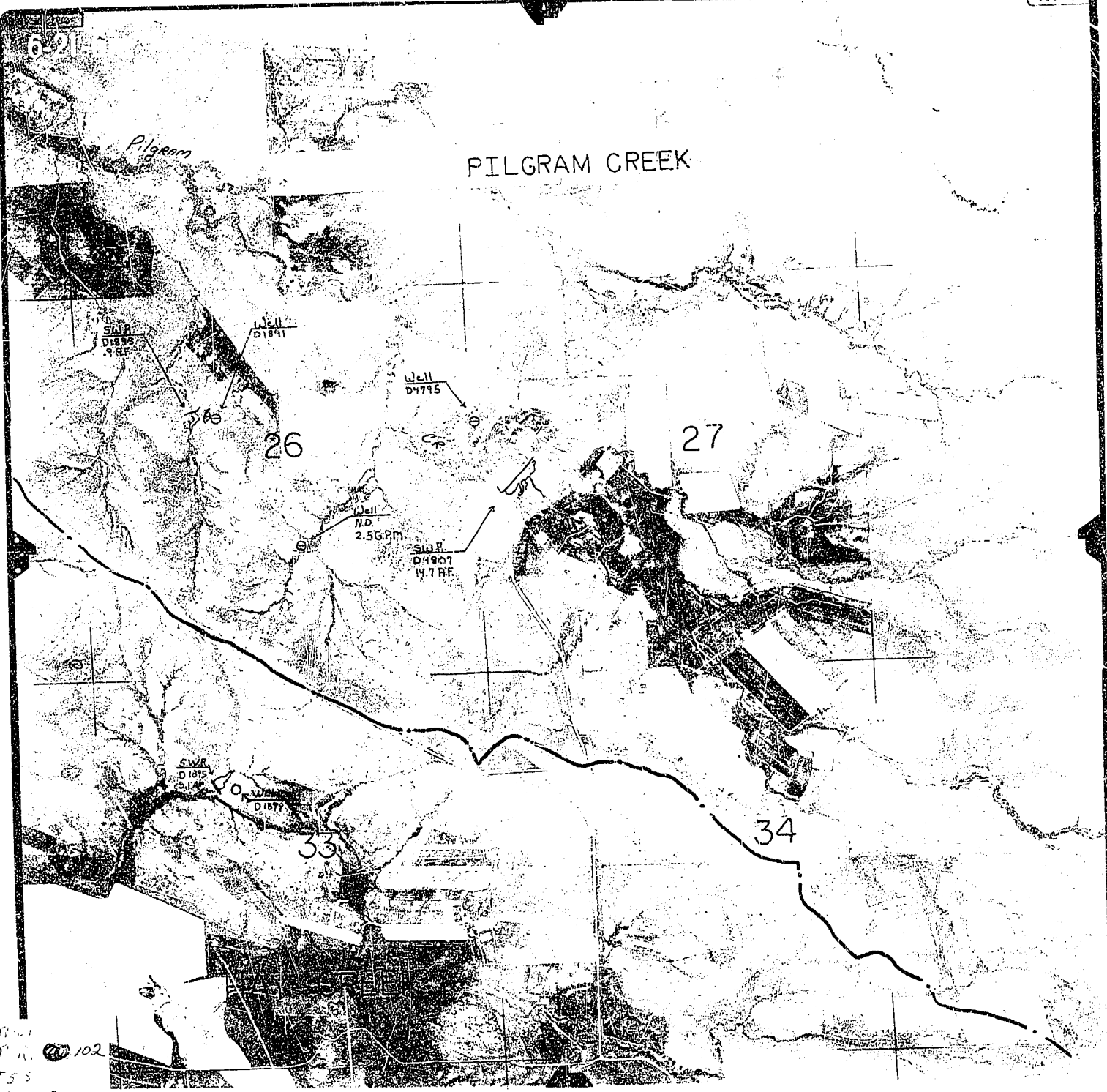
B-1
PR 102
TSS
RS4E



6-2

Pilgram

PILGRAM CREEK



R-1
 S. H. 102
 TSS
 254 E